



# Mini Fix Tank

LOWARA PACKAGED BREAK TANK BOOSTER SET



# Mini Fix Tank

The Mini single pump Fix Tank booster set has been designed to be compact and provide a fluid category 5 air gap complying with the water supply (water fittings) regulations 1999 and comes as a complete package in an enclosed stainless steel cabinet suitable for wall or floor mounting.

The pump control is provided by our well proven Genyo unit which will start the pump on falling pressure and stop the pump when flow ceases.

The Genyo unit also provides low water level protection.

## Volt Free Contacts - Pump Running

Both open and closed volt free contacts are available which indicate if the pump is running. See appropriate drawing for volt free contact wiring configurations. Rating 1A 50v maximum.



## Applications include:

- Wash down in bin stores
- Dentists rinsing equipment
- School laboratory water supplies
- Single hosepipe supplies
- Any application where category 5 protection is required

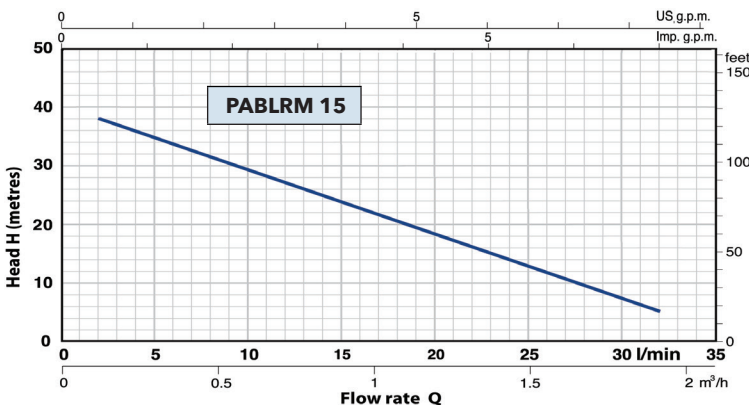
**Typical duty:** 0.25l/s @ 2 bar

## Materials

Case:	Stainless steel
Break tank:	18lt Polyethylene
Ball valve:	Brass
Pump Body:	Ryton
Pipework & fittings:	Copper/brass/Stainless steel
Protection:	IP54
Noise Emissions:	<70dBA

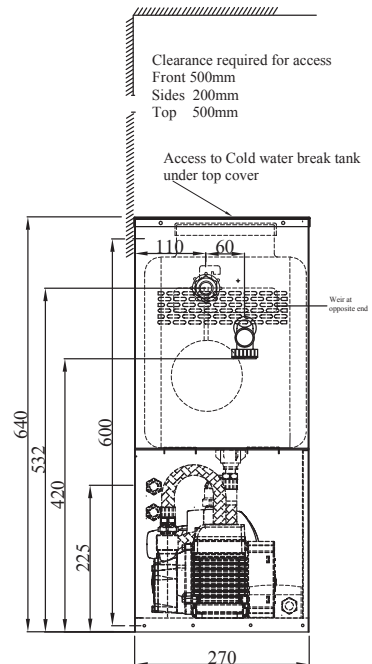
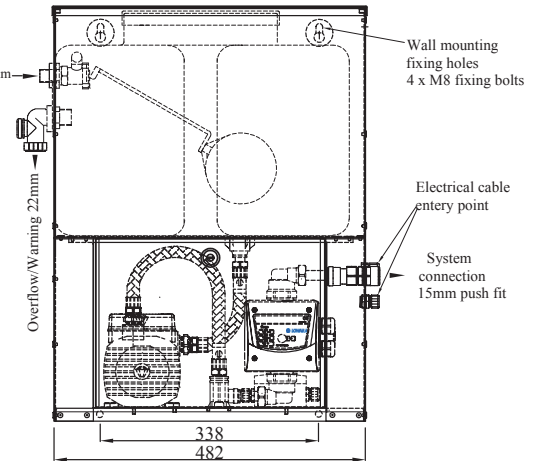
## Characteristic curve and performance data

50 Hz n=2900 1/min HS=0m:



Model	Power		Input current	Q	Flow rate									
	kW	HP			0	0.1	0.3	0.6	0.9	1.2	1.5	1.8	1.9	
Single-phase					0	2	5	10	15	20	25	30	32	
<b>PABLRM 15</b>	0.37	0.50	2.5A	H metres	40	38	35	29	23.5	18	12.5	7	5	

Q = Flow rate H = Total manometric head HS = Suction height Tolerance of characteristic curves in compliance with EN ISO 9906 App. A.



**Xylem Water Solutions UK Limited**  
 Millwey Rise Industrial Estate  
 Axminster, Devon EX13 5HU - UK  
 Tel: (+44) 01297 630230  
 lowaraukenquiries@xylem.com  
 www.xylem.com/uk

**Xylem Water Solutions Ireland Limited**  
 50 Broomhill Close, Airtown Road  
 Tallaght - Dublin 24  
 Tel: (+353) 01452 4444  
 lowara.ireland@xylem.com  
 www.xylem.com/ie