

# ELVARO PUMP SET

## MODEL CC5-156

### Combined Tank and Variable Speed CAT 5 Pump Set

*The Elvaro CC5 is a booster set consisting of a variable speed pump for a range of applications. The function of the Elvaro CC5 is to provide a means of maintaining adequate pressure and flow for water system supply applications. The break tank has been designed to provide fluid Category 5 back flow prevention by the use of an AB air gap in accordance with the water regulations. The cistern comes with a screen weir making it suitable for drinking water applications that may require a type AB air gap.*

#### Standard Features

- WRAS approved Polypropylene storage tank.
- Variable speed operated WRAS approved pumps.
- Epoxy coated steel frame.

#### Description

**Storage Tank:** WRAS approved, Polypropylene with an access lid, screened weir, screened overflow, 1¼ inch solenoid operated inlet valve, with a storage capacity of 60litres. Arranged with a Category 5 Type 'AB' as standard.

**Pump:** Xylem Lowara HME multistage horizontal pump, constructed from AISI 304 stainless steel.

**Suction & Discharge:** Suction and discharge manifolds c/w pressure vessel, pump and vessel isolating valves and pump NRV. Suction connected to the storage tank with an isolation valve, discharge terminating in a 1¼" inch BSP Female threaded connection.

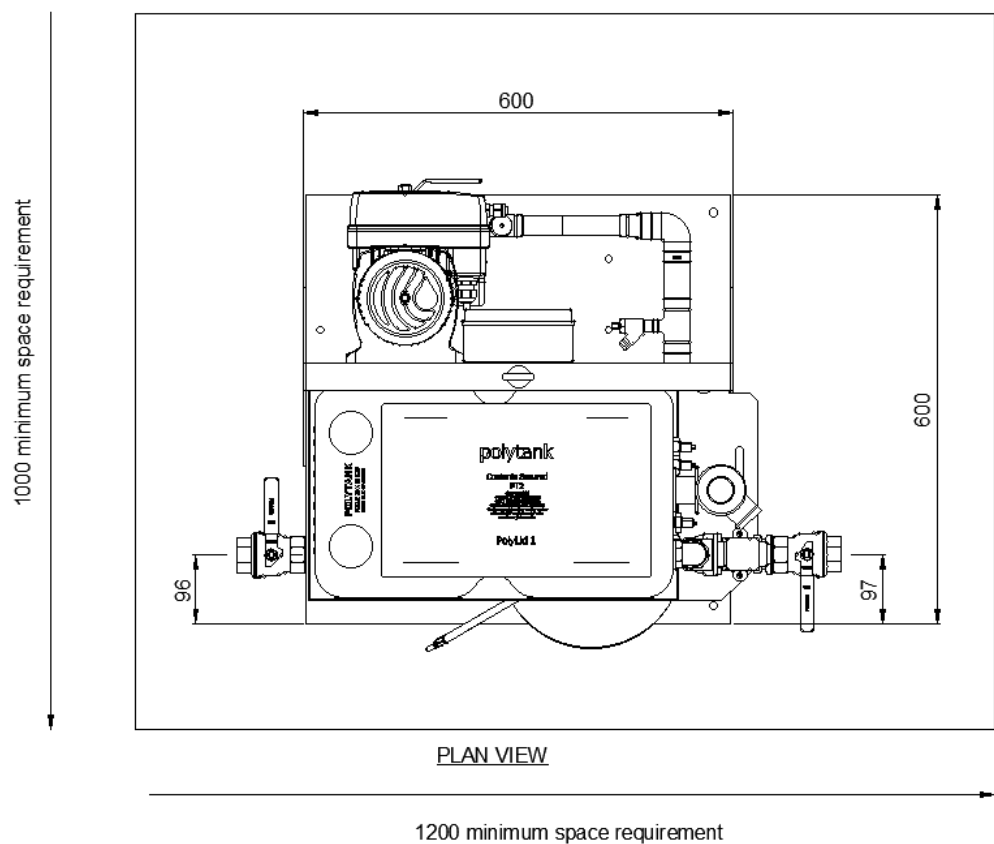
**Controls:** Xylem Lowara e-SM variable speed drives (each pump) fitted above the motor to control the pump with an adjustable set point and provide a constant discharge under automatic operation. A float switch within the tank provides a low-level protection. A common volt-free alarm connection for remote indication is also included.

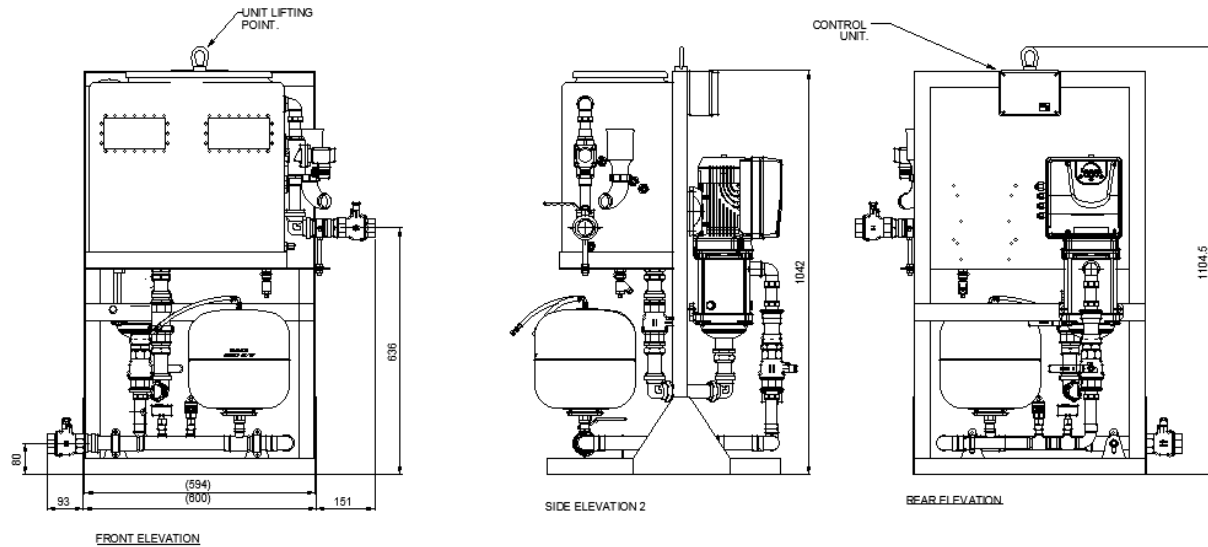
**Power Supply:** 230v/1ph/50Hz

## Technical Details

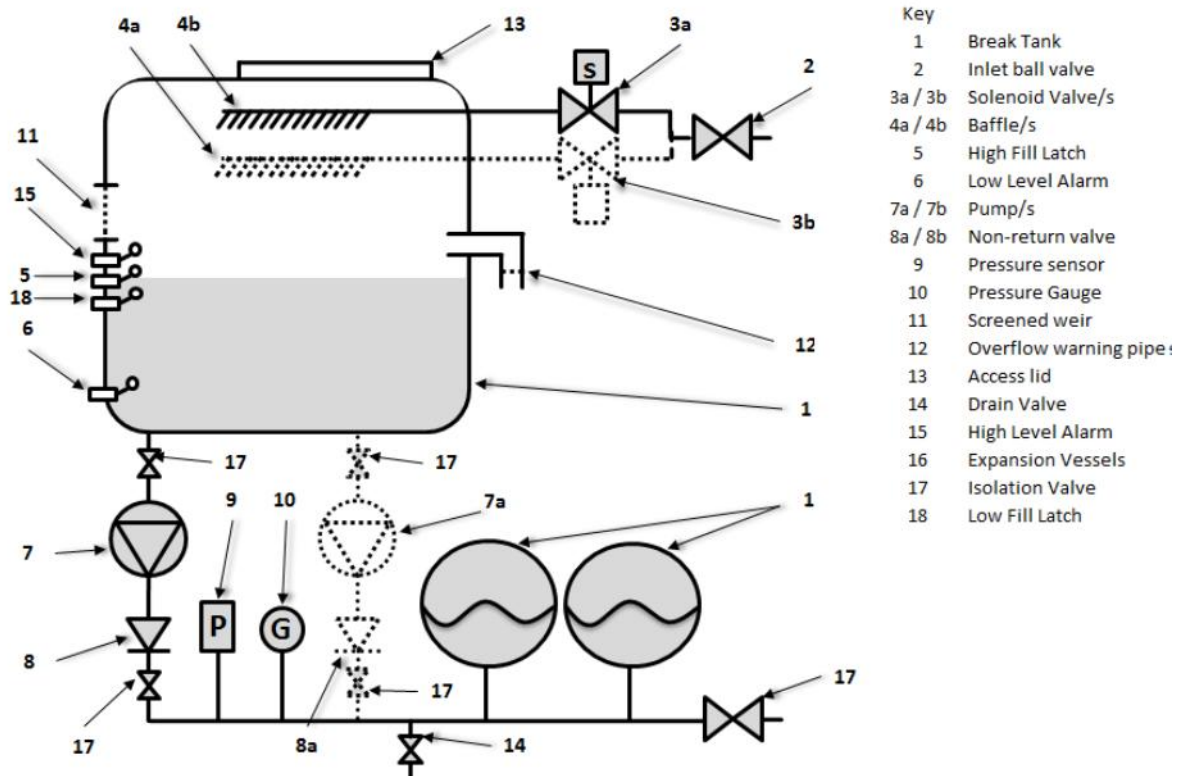
|                               |   |
|-------------------------------|---|
| Typical Applications          | Domestic, Commercial, Industrial & CAT5 wash-down   |
| Operation                     | Single pump operation.  |
| Discharge Flow Range          | 0.75 – 2.65 litres/sec  |
| Discharge Pressure Range      | 20 – 65 metres. Head  |
| Maximum System Pressure       | 10.0 bar  |
| Maximum Liquid Temperature    | 23°C  |
| Control and Electrical Supply | Variable speed and operation control by an inverter drive on each pump. Low water protection via tank mounted float switch. 230v/1ph/50Hz power supply. |
| Water Storage Tank            | (WRAS approved). Capacity 60 litres nominal.  |
| Pressure Vessel               | 1 no. 12 litre. 10bar MWP   |
| Discharge                     | Discharge connection 1½" BSP Female.  |
| Support Frame                 | Water storage tank and pumps mounted on a welded steel, powder coated support frame.  |

## Pump Set Dimensions





## Schematic Layout



## Pump Performance

### Pump Operation (at full speed)

| PUMPSET<br>MODEL No. | PUMP<br>MODEL | Flow<br>@<br>20m.h<br>(l/s) | Flow<br>@<br>25m.h<br>(l/s) | Flow<br>@<br>30m.h<br>(l/s) | Flow<br>@<br>35m.h<br>(l/s) | Flow<br>@<br>40m.h<br>(l/s) | Flow<br>@<br>45m.h<br>(l/s) | Flow<br>@<br>50m.h<br>(l/s) | Flow<br>@<br>55m.h<br>(l/s) | CVH<br>(m) | Motor<br>kW<br>(each<br>pump) | FLC @<br>Full<br>Speed<br>(A) |
|----------------------|---------------|-----------------------------|-----------------------------|-----------------------------|-----------------------------|-----------------------------|-----------------------------|-----------------------------|-----------------------------|------------|-------------------------------|-------------------------------|
| CC5-156              | 5HME06S       | 2.65                        | 2.50                        | 2.25                        | 2.05                        | 1.85                        | 1.65                        | 1.50                        | 1.30                        | 67.0       | 1.10                          | 5.85                          |

